



ART

# Areté Radar Tracker



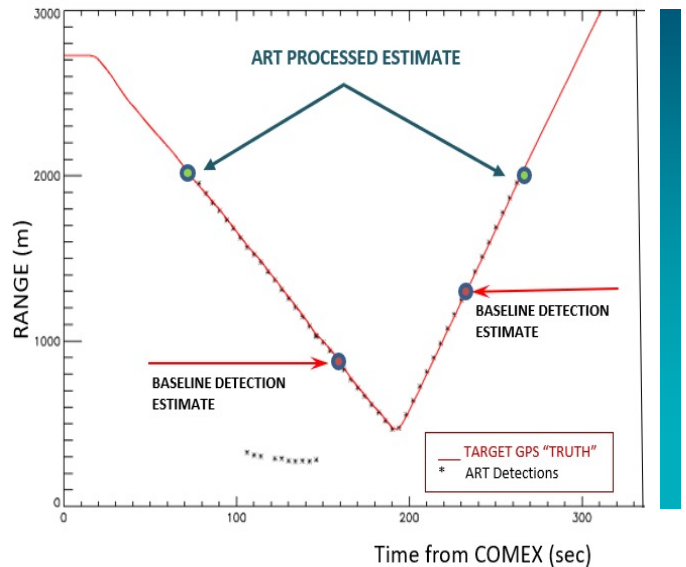
ART is a radar processing framework that leverages ARETE's decades of low signal / high clutter processing to provide enhanced capabilities to today's emerging micro-radar platforms. Designed for mission scalability (CUAS/Border Security/ATR), ART can be tailored to specific radar and platform environments to optimize overall system performance.

## Key Features

- Runs on low SWaP (Size, Weight and Power) processing platforms (NUC)
- Real-time track-before-detect processing
- Significantly increased Range-to-Detect
- Improved performance near Zero Doppler (Slow Movers and Zero Range-rate UAS)
- Improved performance against Low RCS targets
- Continuous "sweeping" provides uniform persistent surveillance across the FOV

## Key Applications

- Drone Surveillance (Including Hovering Assets)
- Cued Target Tracking
- Multi-Sensor Tracking

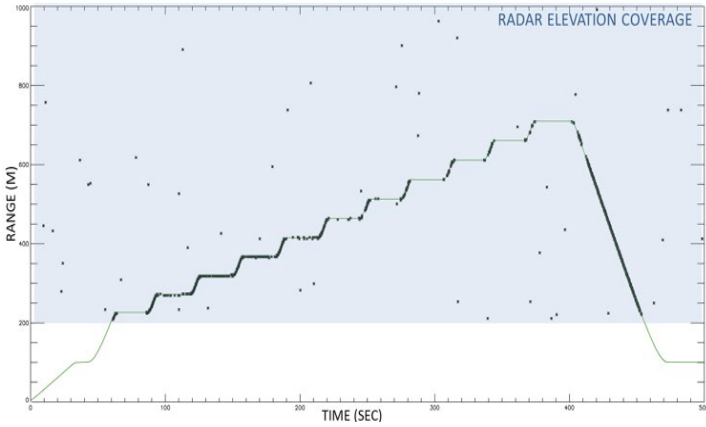


Areté | 9301 Corbin Ave. Northridge, CA 91324 | [arete.com](http://arete.com)  
POC: Scott McGill | (512) 565-8508 | [smcgill@arete.com](mailto:smcgill@arete.com)  
Business POC: Jay Rouse | (571) 255-4035 | [jrouse@arete.com](mailto:jrouse@arete.com)  
All Rights Reserved | Approved for Public Distribution  
Copyright © 2023 Arété

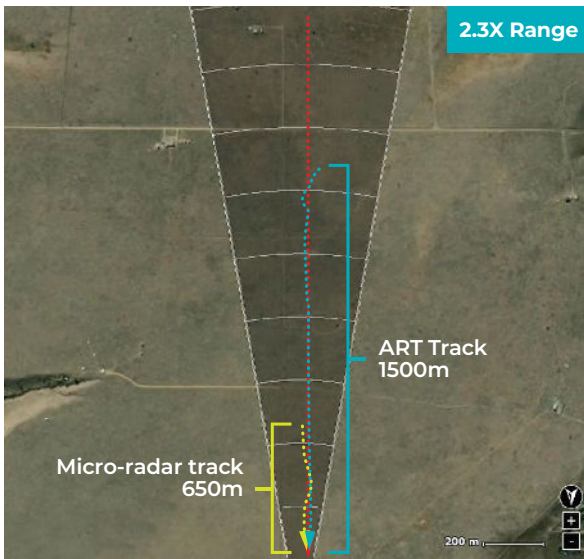
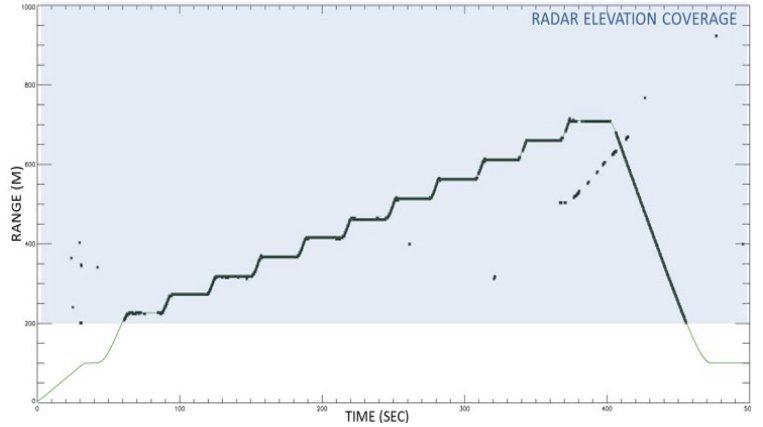


# HOVER RUN

## Standard Radar Processing

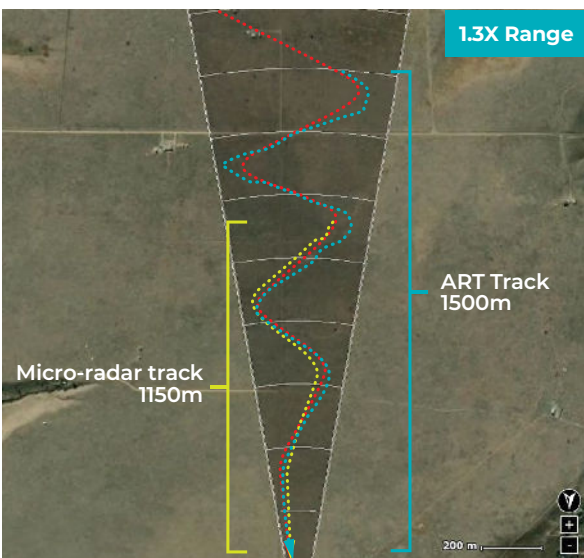


## Areté ART Radar Processing



## Extended Range Inbound Drone

- ..... DJI Phantom IV GPS Track (truth)
- ..... ART Track
- ..... Baseline Micro-Radar Track



## Extended Range "S" Turns

- ..... DJI Phantom IV GPS Track (truth)
- ..... ART Track
- ..... Baseline Micro-Radar Track

