

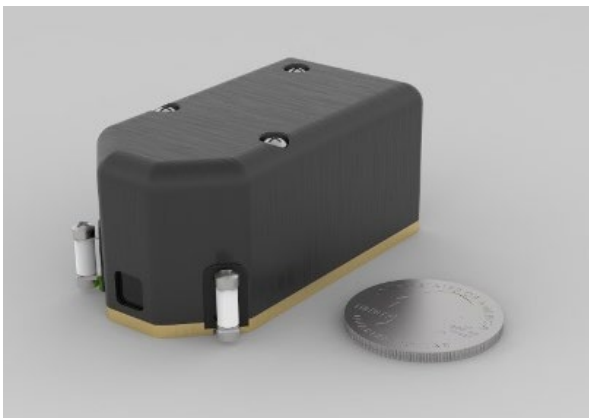


AIRTRAC® -Mini

Configuration



Areté's AIRTRAC-Mini Series provides a ruggedized laser with models capable of > 25 mJ and > 15 mJ pulse energy. The Low-SWaP design provides key laser pulse energy and pulse width capabilities over the full MIL-SPEC temperature range. The condensed size and full system weight of less than 100 grams establishes the AIRTRAC-Mini Series as a new miniature designator standard for lasers of this class.



AIRTRAC-Mini Cavity

Production Electronics are under development for new reduced size PCA.

Testing is performed with current electronics.

Electronic Components

Component Name and Part Number	Qty Needed for System
HV Drive Electronics	Under Development
Diode Driver	
AIRTRAC Control Board	

Beam Characteristics

Divergence	< 750 urad
------------	------------

*Custom lens design for improved divergence



POC: | Airtrac.Sales@arete.com
Business POC: Jay Rouse, (571) 255-4035 | jrouse@arete.com
Areté | 9301 Corbin Ave. Northridge, CA 91324 | arete.com
All Rights Reserved | Approved for Public Distribution | Copyright © 2023 Arété

